

Hardaway Timberlands

Property Features

Located just 30 minutes west of Tallahassee in Gadsden County, Hardaway Timberlands is an outstanding property that possesses all the characteristics that make for a productive timberland and recreational tract. Formerly part of the far flung St. Joe empire that once totaled over a million acres throughout the Florida panhandle, Hardaway Timberlands has been professionally managed for timber production for many years.

It would difficult to draw up more desirable attributes for a timberland investor. These include:

- 93% plantable
- High site indexes
- Nine different age classes of loblolly and slash ranging from 21 - 44 years
- Average age of planted pines - 34 years
- Strong timber market

Additionally, because of a location that has a high concentration of cultivated lands, there is an abundance of game on this tract.

At a Glance

Acreage:

584 Acres

Asking Price:

\$1,925 per acre

Location:

Gadsden County, Florida

Special Attributes:

- Outstanding timberland characteristics
- Professionally managed for decades
- Great hunting due to surrounding farms
- Located just 30 miles west of Tallahassee via I-10

SOLD

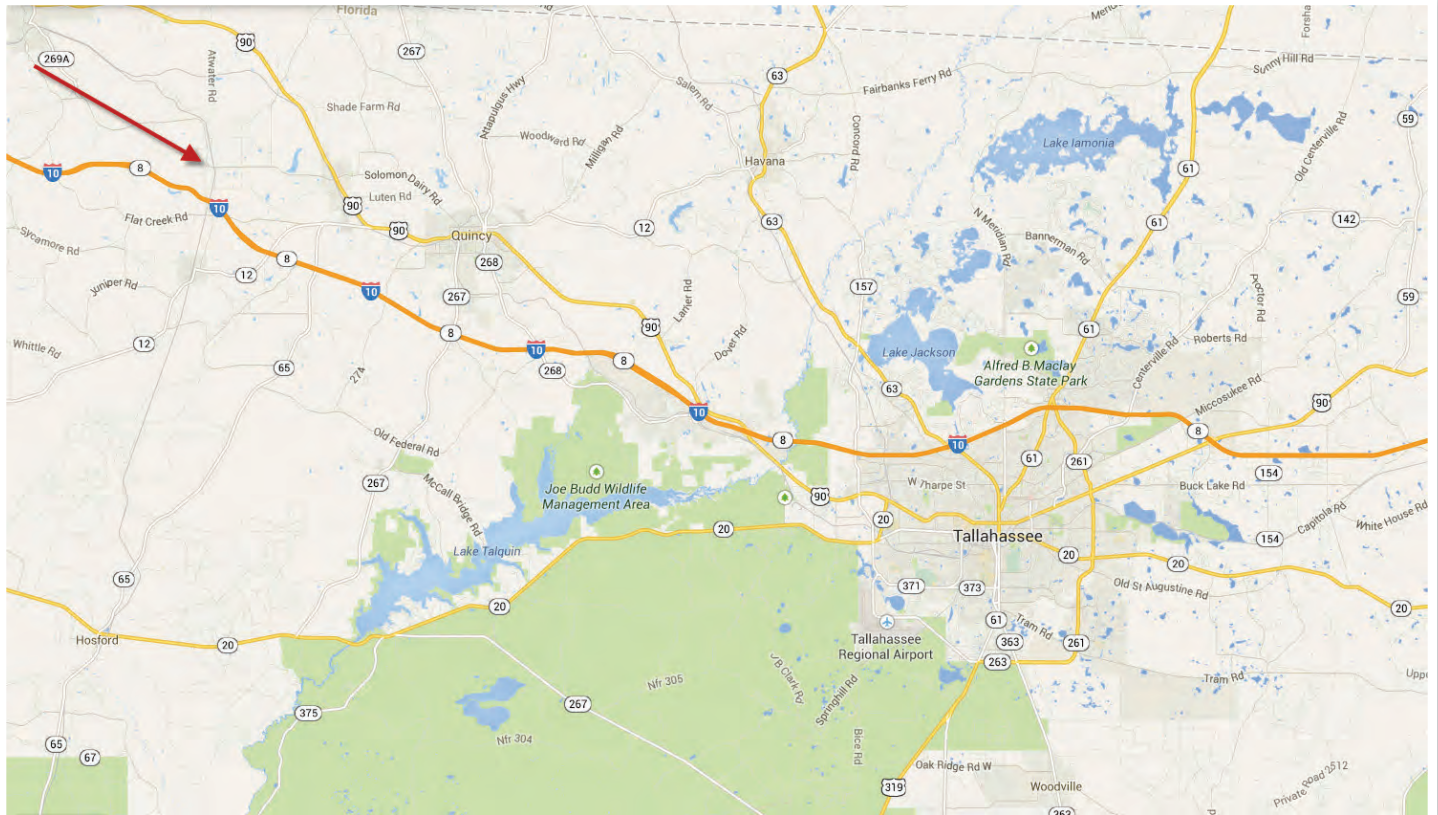


Arnie Rogers, Licensed Real Estate Broker
Verdura Realty, LLC • 254 East 6th Avenue • Tallahassee, FL 32303
Cell: 850.491.3288 • Email: arogers@verduraproperties.com
www.VerduraProperties.com

 **VERDURA**
REALTY, LLC

Hardaway Timberlands

Location Map

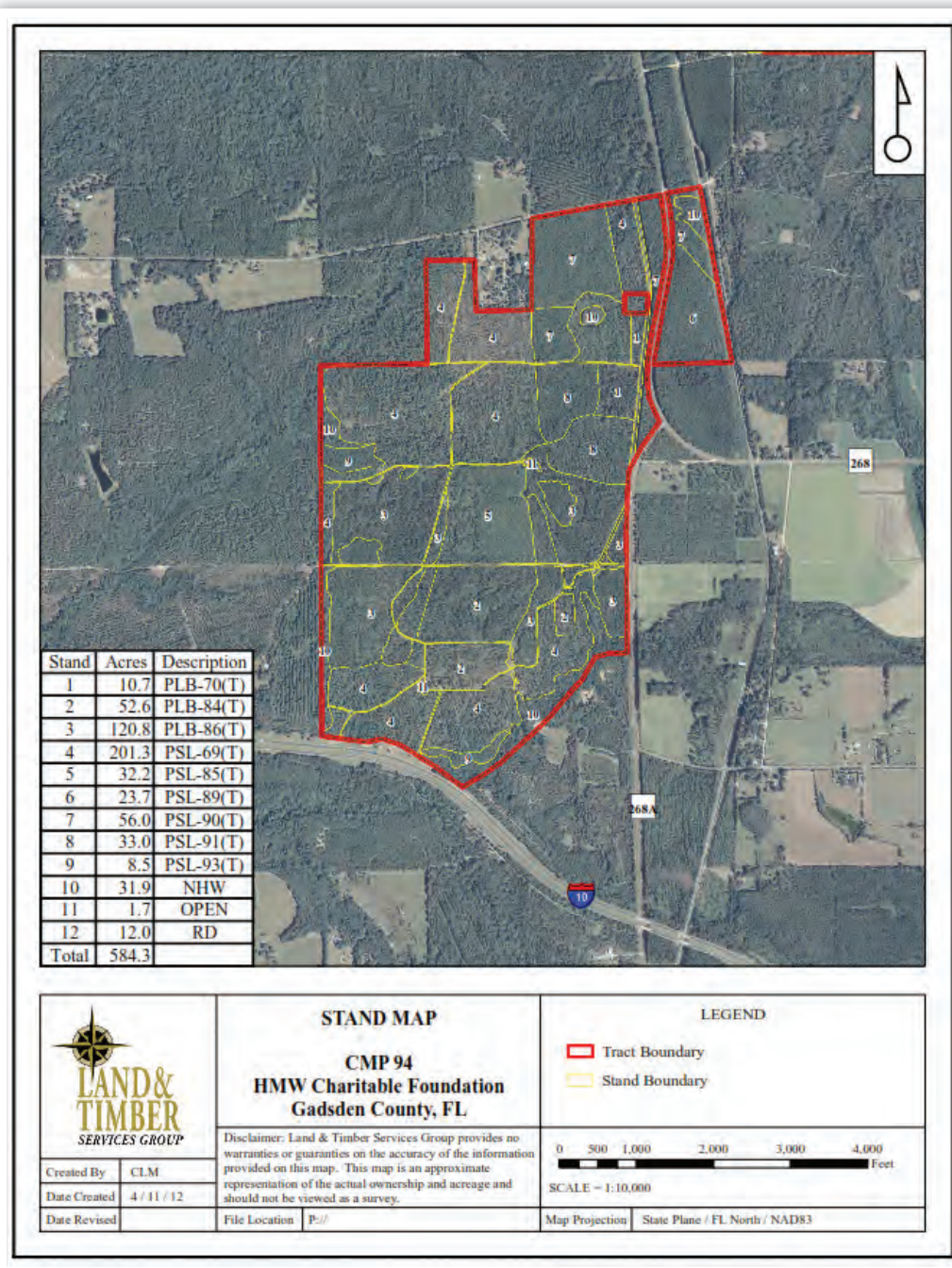


Arnie Rogers, Licensed Real Estate Broker
Verdura Realty, LLC • 254 East 6th Avenue • Tallahassee, FL 32303
Cell: 850.491.3288 • Email: arogers@verduraproperties.com
www.VerduraProperties.com



Hardaway Timberlands

Aerial – Timber Map



Arnie Rogers, Licensed Real Estate Broker
 Verdura Realty, LLC • 254 East 6th Avenue • Tallahassee, FL 32303
 Cell: 850.491.3288 • Email: arogers@verduraproperties.com
www.VerduraProperties.com



Hardaway Timberlands

Photos



Arnie Rogers, Licensed Real Estate Broker
Verdura Realty, LLC • 254 East 6th Avenue • Tallahassee, FL 32303
Cell: 850.491.3288 • Email: arogers@verduraproperties.com
www.VerduraProperties.com

